

Self-Hosted Laserfiche 12

Experience new metadata and testing features, powerful administration tools, and enhanced usability.



Why Upgrade?



Improved Usability

You'll spend less time clicking, and more time creating with easier navigation, a refreshed UI/UX, and compact data-dense views.



More Powerful Administration

Get a whole-of-system view of your Laserfiche implementation, along with powerful Enterprise Identity Management tools and more efficient user management.

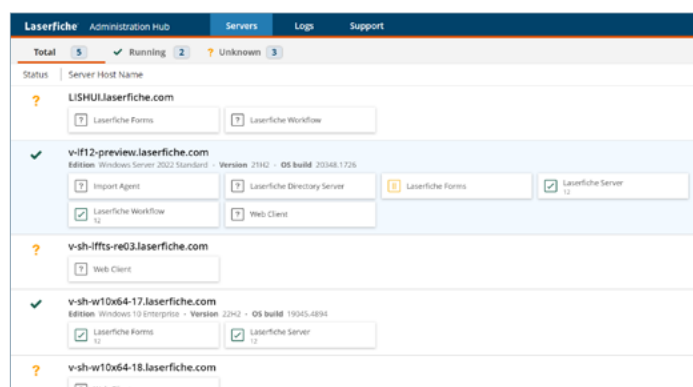


Flexible Deployments

It's easier than ever to install the latest releases with new installer tools for smoother rollouts and better user adoption.

What's Included?

- Brand new features to streamline metadata management, testing and administration, and simplify deployment
- Common operations made easier and more intuitive
- Improved identity management and performance for growing systems
- Consistent configuration and usability throughout the suite
- Training and education resources to set you up for success



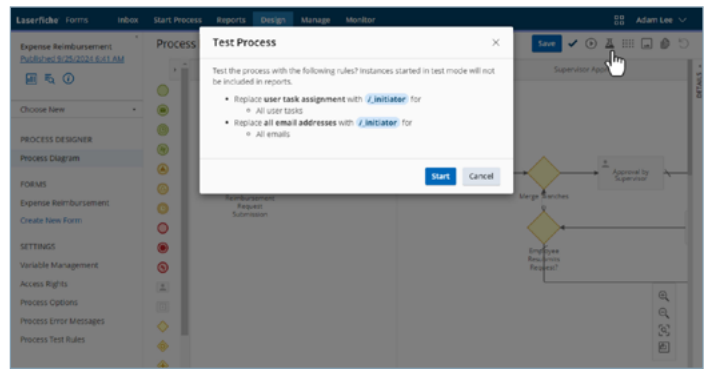
The Administration Hub interface showing all servers.

Key Benefits For Your Organization

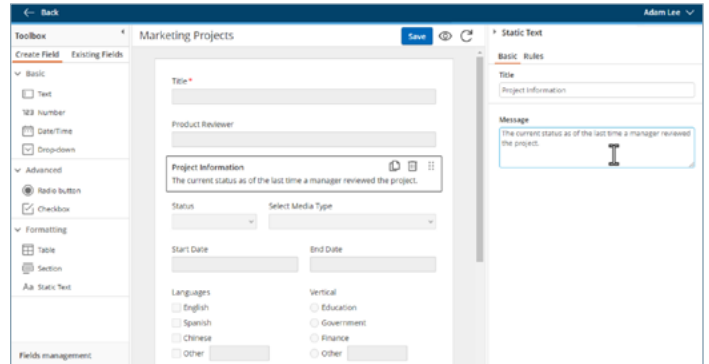
- ✓ **Metadata Enhancements and Designer:** More intuitive display and interactions for metadata reduce entry errors and user training needs.
- ✓ **Forms Process Testing:** Don't put your production data at risk or spend hours troubleshooting when testing your forms and processes.
- ✓ **System Insights:** View your entire system with centralized logging, administration tools, and more.
- ✓ **Upgrade Simplification:** Reduce upgrade effort and keep your system up to date with the centralized installer.
- ✓ **Easier Enterprise Identity Management:** It's quicker than ever to manage and onboard your users with enhanced automation tools.
- ✓ **Enhanced Navigation:** An integrated app-picker and compact views make navigation easier.

Training and Resources Available

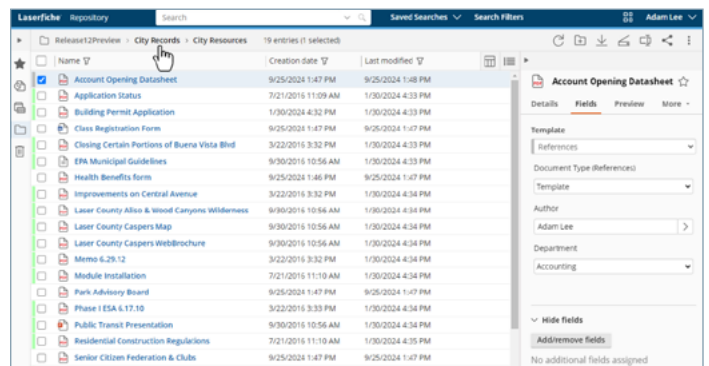
- **Updated Training Materials:** Comprehensive Laserfiche 12 training is available on Laserfiche Aspire on-demand.
- **Enhanced Documentation:** Easier navigation and guided with helpful examples and best practices.



Laserfiche Forms process test mode and rules.



Example of Laserfiche 12 metadata designer showcasing new template capabilities.



Laserfiche Repository in compact view mode.

ABOUT LASERFICHE

Laserfiche is the leading SaaS provider of intelligent content management and business process automation. Through workflows, electronic forms, document management and analytics, Laserfiche® accelerates how business gets done. Laserfiche's cloud-first development approach enables organizations across industries to boost productivity, scale growth and deliver digital-first experiences.

